



CIMPLICITY® Machine Edition Logic Developer-PLC

A Complete Set of PLC Programming Tools. Logic Developer-PLC is the most advanced set of PLC programming tools on the market today. As part of the CIMPLICITY® Machine Edition family of products, it provides an integrated solution to a diverse set of PLC application development requirements. Logic Developer-PLC offers a broad range of flexible and powerful tools to meet your PLC development requirements for PLC and remote I/O hardware configuration, PLC programming languages, application development tools, and on-line diagnostic tools.

Product Features

Configure. Logic Developer-PLC supports the full range of GE Fanuc PLCs and remote I/O products, including the Series 90™ Micro, VersaMax® Nano/Micro, VersaMax, Series 90-30 and Series 90-70 PLCs, PACSystems™ controllers, and VersaMax Remote I/O. Configuration support is also provided for a wide range of field busses such as Ethernet Global Data (EGD), Genius®, DeviceNet™, ModBus TCP, and Profibus™.

Program. Logic Developer-PLC provides you with a complete set of programming languages to develop your PLC applications. Programming languages supported by Logic Developer-PLC are Ladder Diagram (LD), Instruction List (IL), Structured Text (ST)*, and C Blocks.

Commission. Logic Developer-PLC includes a complete set of on-line development tools to aid you in commissioning your PLC application. Tools such as "Test Edit" for PACSystems logic, "Run Mode Store (RMS)" of logic, and "Word-for-Word change" of logic allow you to tune the application in real-time without stopping the process. Data monitoring tools such as the Data Watches and Reference View Tables allow you to create your own custom data monitor tables to provide a window into your PLC application execution.

Maintain. Logic Developer-PLC provides you with a complete set of tools to aid you in maintaining your PLC applications. Diagnostic tools such as on-line Fault Tables and Forced Variables Report provide you the ability to diagnose issues and problems that may have occurred with your system.

*Available 2H 2004 for PACSystems

imagination at work



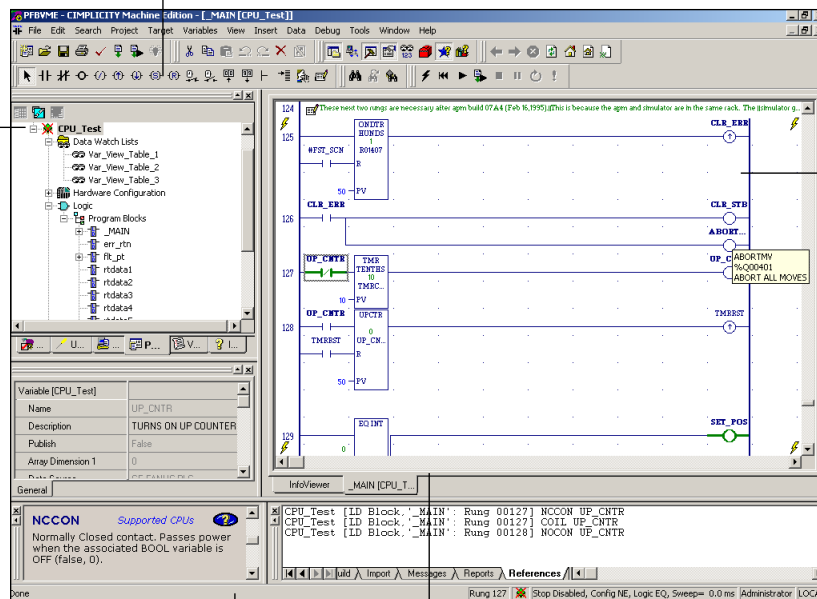
Fully Integrated Development System. CIMPLICITY Machine Edition's development environment provides a simple, easy-to-learn interface. Logic Developer-PLC automatically shares editing and configuration tools with other components when they are installed, creating an integrated, drag-and-drop workspace that makes developing applications simple. Just drag PLC logic or a variable to an HMI animation panel to link them, or vice versa. Work on all parts of your automation system simultaneously, without switching between programs!

Toolchest Offers Object Oriented Re-useability and Pre-defined Tools. Build applications rapidly with pre-configured objects from the Toolchest, a storage system for objects and their variables, associated logic or HMI elements and data structures. Drag your own work to the Toolchest for easy reuse — logic, scripting, graphical objects — anything you want to save and re-use.

CIMPLICITY Machine Edition. Logic Developer-PLC is the PLC programming component of CIMPLICITY Machine Edition, an automation software breakthrough deploying HMI, motion, and multitarget control in an integrated development environment. This environment provides a common user interface, drag-and-drop editing, and a rich set of development tools. CIMPLICITY Machine Edition includes all the automation software components you need to reduce your programming, configuration, commissioning, monitoring, and maintenance costs.

Ladder diagram specific toolbar provides for rapid development of PLC application programs.

All components of your PLC application: Hardware Configuration, Program Logic, Data Watches, and Reference View Tables, are organized in the navigator. Click on an item to open it, click on the right mouse menu for a list of operations that you can perform on an item.



Ladder Diagram Editor provides a display of the PLC application, and indicates the Off-line and On-line values of application variables. Force status for discrete variables and Retentive status for coils is also indicated.

Status bar indicates the current state of the PLC, as well as the Configuration and Logic equality between the PLC programmer and the PLC.

Customizable Workspace lets you navigate quickly between windows and display multiple windows of information at a time.

GE Fanuc Automation Information Centers

**USA and the Americas: 1-800-GE FANUC
or (434) 978-5100**

Europe, Middle East and Africa: (352) 727979-1

Asia Pacific: 86-21-3222-4555

Additional Resources

For detailed technical specifications and product ordering information, please visit the GE Fanuc website at:

www.gefanuc.com

