

Type PPM and PPX Voltage Transformers

600 Volt, 10 kV BIL, Indoor or Outdoor
Product Bulletin 1VAP428731-DB



ABB

Product Features

- 600 Volt Indoor or Outdoor
- 10 kV BIL
- 50 & 60 Hertz
- Primary Volts 40-600
- Secondary Volts 120 (other low voltage outputs available)
- Thermal rating:
 - PPM 500 VA @ 30° C Ambient
 - PPM 350 VA @ 55° C Ambient
 - PPX 500 VA @ 30° C Ambient
 - PPX 350 VA @ 55° C Ambient
- UL Recognized Component;
File No. E96461



UL Recognized Component

Application

Types PPM and PPX are designed for metering, relaying, and other control applications requiring accurate voltage transformation at burdens through 75 VA, 85% PF.

Core and Coil

A high-low coil grouping is used. The high voltage coil is wound on an insulating tube, major high-low insulation is positioned, and the low voltage coil is wound directly over the high voltage coil. One leg of an octagonal core is fitted through the coil window. The core is banded to a support frame and the complete assembly is molded in thermoplastic rubber.

Insulation

Thermoplastic rubber insulating material is permanently molded to the core and coil assembly, resulting in a compact unit with excellent mechanical, thermal, and dielectric characteristics.

Terminals

Primary and secondary terminals are compression-type and are sized for #14 through #3 wire. The location of the HV (H1 - H2) and LV (X1 - X2) terminals is clearly identified by lettering that is molded into the transformer. Clear, sealable terminal covers are supplied as standard.

Base

The base is constructed of corrosion-resistant aluminum and is secured to the encapsulated base support by four symmetrically located screws.

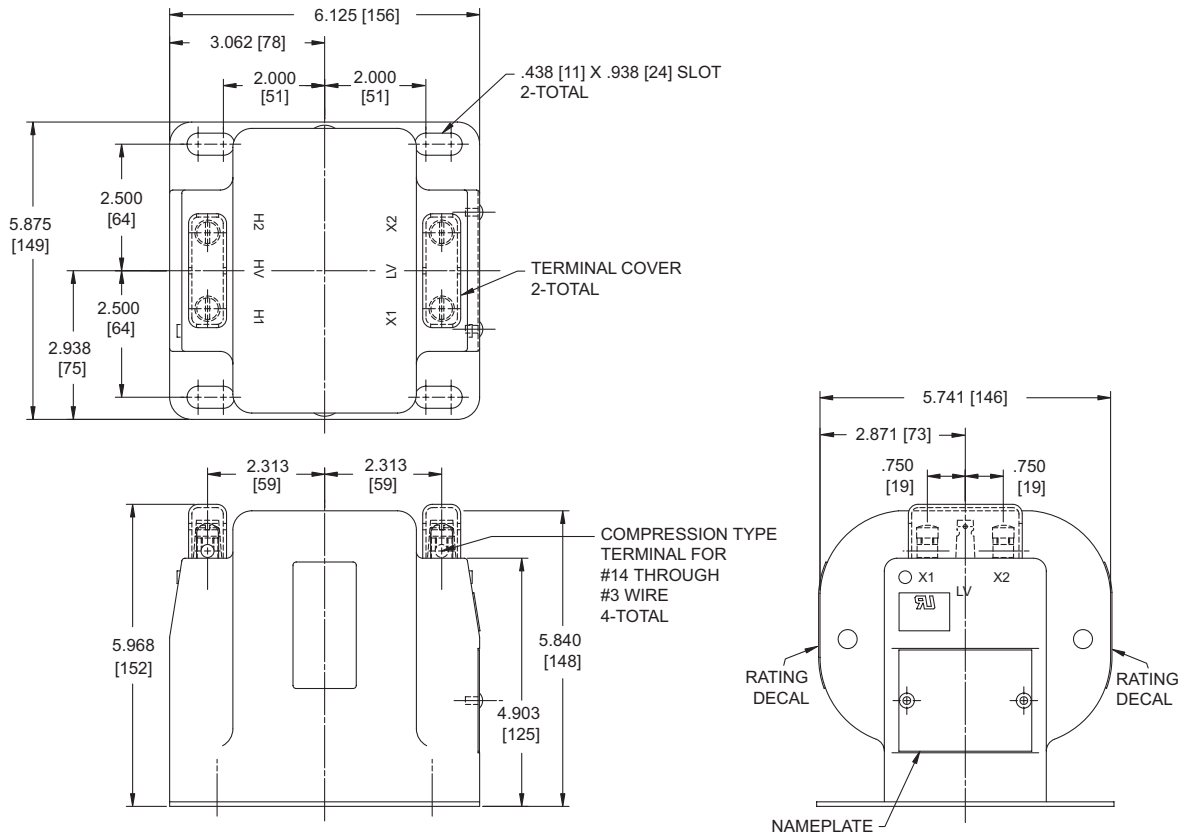
Test Reports

IEEE test reports are stored electronically and can be e-mailed in various formats at the time of shipment.

Standards

This unit meets all applicable IEEE and NEMA standards and is a UL Recognized Component.

Unit Dimensions



Approximate weight is 19 lbs.

Note: Metric dimensions are displayed in [mm].

Selection Guide

Primary Volts	Winding Ratio	IEEE Metering Accuracy	Frequency (Hz)	Style Number
PPM				
240/416Y	2:1	0.3Y	60	7526A10G01
288/500Y	2.4:1	0.3Y	60	7526A10G02
300/520Y	2.5:1	0.3Y	60	7526A10G03
480/480Y	4:1	0.3Y	60	7526A10G04
600/600Y	5:1	0.3Y	60	7526A10G05
120/208Y	1:1	0.3Y	60	7526A10G06
PPX				
40/70Y	.3333:1	0.3W, 0.6X	60	7525A16G06
48/83Y	0.4:1	0.3W, 0.6X, 1.2Y	60	7525A16G07
60/104Y +	0.5:1	0.6Y	50/60	7525A16G10
69.3/120Y	0.578:1	0.3W, 0.6Y	60	7525A16G03
120/208Y +	1:1	0.6Y	50/60	7525A16G01
120/208Y* +	1.7143:1	0.3X	50/60	7525A16G05
207.8/360Y	1.7317:1	0.3Y	60	7525A16G09
346/600Y	2.8833:1	0.3Y	60	7525A16G08
400/400Y +	3.33:1	0.3W, 0.6X	50/60	7525A16G04

* 70 V Secondary

+ Thermal Rating: 350 VA @ 30° C Ambient

Additional styles available upon request. Contact your ABB Sales Representative or call +1-252-827-3212 for more information.



ABB Inc.
 Highway 43 North
 Pinetops, NC 27864
 Tel: +1-252-827-3212
www.abb.com/mediumvoltage